

Product datasheet

Specifications



Socket, separate contact, 10 A, relay type RSB, screw connector, 250 V AC

RSZE1S48M

Main

Range of product	Harmony Electromechanical Relays
Device short name	RSZ
Product or component type	Socket
Product compatibility	Plug-in relay RSB with 1 C/O contact at 16 A Plug-in relay RSB with 2 C/O contact at 8 A
Contacts type and composition	2 C/O
[Ith] conventional free air thermal current	10 A

Complementary

Shape of pin	Flat
[Ue] rated operational voltage	< 250 V AC
Contact terminal arrangement	Separate
Connections - terminals	Screw connectors, 1 x 0.25...1 x 2.5 mm ² (AWG 22...AWG 14) flexible with cable end Screw connectors, 2 x 0.25...2 x 1 mm ² (AWG 22...AWG 17) flexible with cable end Screw connectors, 1 x 0.5...1 x 2.5 mm ² (AWG 20...AWG 14) solid without cable end Screw connectors, 2 x 0.5...2 x 1.5 mm ² (AWG 20...AWG 16) solid without cable end
Tightening torque	< 0.8 N.m for M3 screw(s)
Fixing mode	By screw (panel) Clip-on (35 mm symmetrical DIN rail)
[Uimp] rated impulse withstand voltage	3.6 kV
Overvoltage category	III
pollution degree	3
Sale per indivisible quantity	10
Width	15.5 mm
Net weight	0.05 kg

Environment

IP degree of protection	IP20 conforming to IEC 60529
Standards	IEC 61984
Product certifications	CSA UL
Marking	CE
Ambient air temperature for storage	-40...85 °C
Ambient air temperature for operation	-25...85 °C

Price is "List Price" and may be subject to a trade discount – check with your local distributor or retailer for actual price.

Packing Units

Unit Type of Package 1	PCE
Number of Units in Package 1	1
Package 1 Height	1.700 cm
Package 1 Width	6.200 cm
Package 1 Length	8.000 cm
Package 1 Weight	39.000 g
Unit Type of Package 2	BB1
Number of Units in Package 2	10
Package 2 Height	7.000 cm
Package 2 Width	9.000 cm
Package 2 Length	17.000 cm
Package 2 Weight	428.000 g
Unit Type of Package 3	S03
Number of Units in Package 3	240
Package 3 Height	30.000 cm
Package 3 Width	30.000 cm
Package 3 Length	40.000 cm
Package 3 Weight	10.575 kg

Contractual warranty

Warranty	18 months
----------	-----------



Environmental Data

Schneider Electric aims to achieve Net Zero status by 2050 through supply chain partnerships, lower impact materials, and circularity via our ongoing “Use Better, Use Longer, Use Again” campaign to extend product lifetimes and recyclability.

[Environmental Data explained >](#)

[How we assess product sustainability >](#)

Environmental footprint

Carbon footprint (kg.eq.CO2 per CR, Total Life cycle)	1
---	---

Use Better

Materials and Substances

Packaging made with recycled cardboard	Yes
--	-----

Packaging without single use plastic	Yes
--------------------------------------	-----

[EU RoHS Directive](#)

Pro-active compliance (Product out of EU RoHS legal scope)

REACH Regulation

[REACH Declaration](#)

Use Again

Repack and remanufacture

Circularity Profile	No need of specific recycling operations
---------------------	--

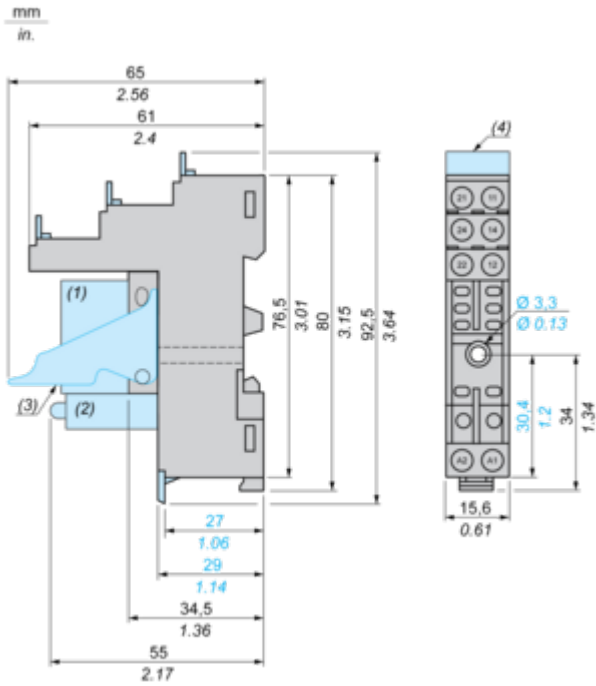
Take-back	No
-----------	----

WEEE

 The product must be disposed on European Union markets following specific waste collection and never end up in rubbish bins

Dimensions Drawings

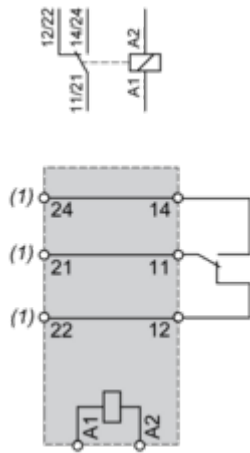
Dimensions



- (1) Relays
- (2) Protection module
- (3) Maintaining clamp
- (4) Legend

Connections and Schema

Wiring Diagram



(1) Terminals 11 and 21,14 and 24,12 and 22 must be linked for this references

NOTE: For DC input, A1 have to be +, otherwise it would short circuit from protection module

Technical Illustration

Dimensions

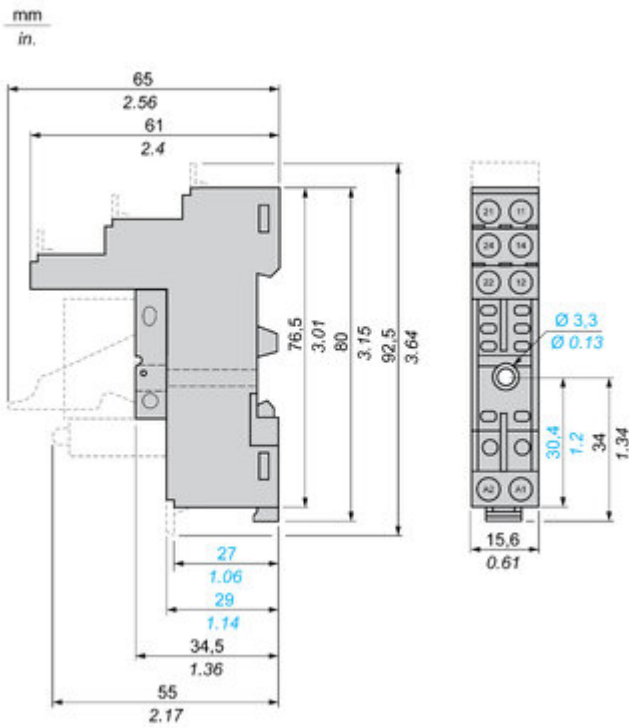
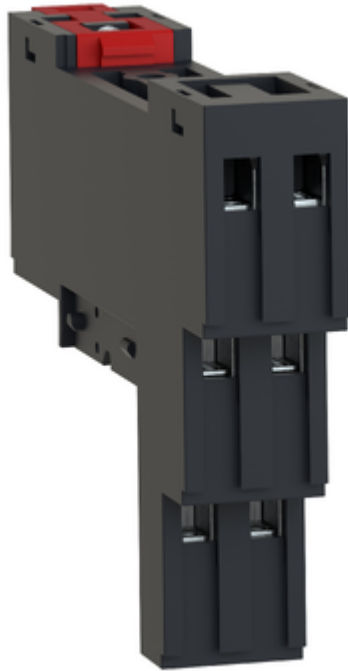


Image of product / Alternate images

Alternative





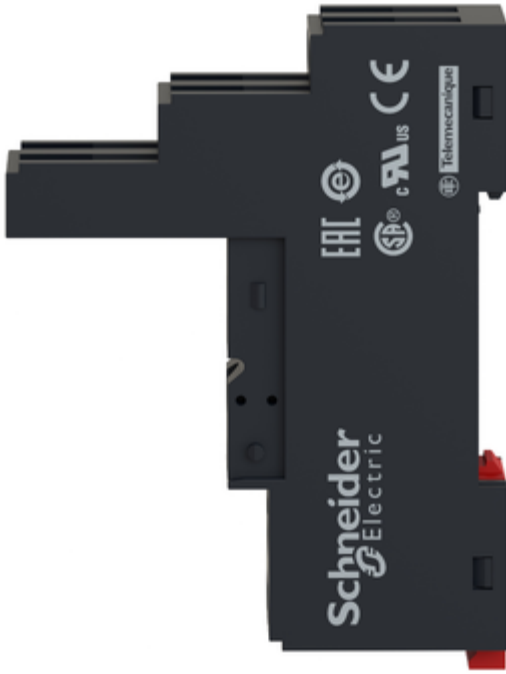


Image of product in real life situation

